

PHEASANT

The 2007 pheasant season covered 20 October 2007 – 6 January 2008 statewide. There was also a Youth season open 6-8 October on public and private land and an early residents-only season open 13-15 October on public lands only. The daily limit was 3 cock pheasants, possession 15. To hunt pheasants, residents were required to hold small game, 1-day small game, adult or junior combination, or youth small game licenses; nonresidents were required to obtain the nonresident small game the nonresident youth small game, or nonresident shooting preserve license. Harvest surveys were sent to both resident and nonresident hunters. No shooting preserve license holders were surveyed and none of their harvest is included in any of the data in this report.

In 2007, there were 96,070 resident and 107,375 nonresident licenses issued that allowed holders to hunt pheasants. Approximately 8% of residents and nonresidents were surveyed for the upland bird seasons. Survey response rates were 68.3% for residents and 70.6% for nonresidents.

Based on survey responses indicating at least one day of hunting pheasants, there were a projected 77,788 resident (31,650 small game, 33,485 combination, 5,592 youth small game, 7,076 junior combination) and 103,048 nonresident (99,672 small game, 3,370 youth small game) pheasant hunters.

From the survey responses, a projected total of 2,122,345 pheasants were harvested (969,238 by residents, 1,153,107 by nonresidents) during the 2007 seasons. When asked their satisfaction on the season, (1 being least satisfied, 7 being most satisfied), resident upland bird hunters reported an average satisfaction rating of 5.39 while nonresidents reported a higher satisfaction rating of 6.00.

Approximately 20,755 residents participated in the early, resident-only season. The projected harvest for this season was 46,491 birds.

The Youth-only season (6-8 October) overall participation rate was approximately 7.5% (6.1% Combination license, 3.9% Small Game, 3.7% Junior Combination, 32.8% Youth Small Game); nonresidents were not surveyed on their participation in this season.

Comparison of the 1997 - 2007 Pheasant season statistics

Year	<i>Resident Hunters</i>					<i>Nonresident Hunters</i>				
	<i>Number Hunters</i>	<i>Harvest</i>	<i>Ave Day Hunted</i>	<i>Ave Bag</i>	<i>Satisfaction</i>	<i>Number Hunters</i>	<i>Harvest</i>	<i>Ave Day Hunted</i>	<i>Ave Bag</i>	<i>Satisfaction</i>
1997	70,573	525,504	6.37	7.56	N/A	42,808	395,213	4.23	9.25	N/A
1998	74,727	603,355	6.90	8.27	4.33	60,364	581,767	4.44	9.66	5.22
1999	84,342	768,356	7.12	9.11	4.60	71,956	695,815	4.57	9.67	5.33
2000	79,790	759,601	6.82	9.52	4.71	70,182	688,133	4.31	9.52	5.20
2001	76,772	672,523	6.80	8.76	4.40	73,326	688,531	4.26	9.39	5.17
2002	70,822	587,823	6.84	8.30	4.28	74,874	673,866	4.18	9.00	5.01
2003	78,396	912,529	7.21	11.64	5.08	83,538	902,210	4.21	10.80	5.72
2004	78,984	744,819	7.35	9.43	4.62	91,948	908,446	3.83	9.88	5.25
2005	79,270	947,277	7.94	11.95	5.19	94,956	1,001,786	4.43	10.55	5.83
2006	79,955	881,904	7.63	11.03	4.99	98,213	964,452	4.29	9.82	5.71
2007	77,788	969,238	7.88	12.46	5.39	103,048	1,153,107	4.61	11.19	6.00

PHEASANT HARVEST PROJECTIONS FOR 2007

Revised: 28 March 08

	<u>RESIDENT TOTALS BY LICENSE TYPE</u>					<u>NONRESIDENT TOTALS</u>		
	Small Game	Combo	Junior Combo	Youth SmGm	Sum Estimates	Nonres Sm Game	Youth Sm Game	Sum Estimates
Licenses Sold	37,446	42,867	7,873	7,884	96,070	103,863	3,512	107,375
Projected ACTIVE UPLAND BIRD HUNTERS	31,816	33,692	5,617	7,112	78,226	99,885	3,370	103,255
Number Sampled by Survey	2,828	3,320	598	646	7,392	7,385	238	7,623
Number Responded to Survey	1,809	2,481	321	439	5,050	5,235	146	5,381
Responded and Participated in Season	1,537	1,950	229	396	4,112	5,151	142	5,293
Responded but DID NOT HUNT	272	531	92	43	938	84	4	88
Survey Response Rate	64.0%	74.7%	53.7%	68.0%	68.3%	70.9%	61.3%	70.6%
No. Hunters Reporting Pheasant Days	1,529	1,938	228	394	4,089	5,140	142	5,282
Sum Pheasant Hunted Days	10,414	16,690	1,983	3,131	32,218	23,769	555	24,324
Average Days Hunted Pheasants	6.81	8.61	8.70	7.95	7.88	4.62	3.91	4.61
Sum Pheasants Bagged	16,207	28,907	2,800	3,031	50,945	58,072	1,057	59,129
Average Pheasant Bag for Season	10.60	14.92	12.28	7.69	12.46	11.30	7.44	11.19
Projected Days Pheasant Hunting	215,537	288,306	48,650	56,254	612,969	460,485	13,177	475,051
Projected No. Pheasant Hunters	31,650	33,485	5,592	7,076	77,788	99,672	3,370	103,048
Projected Pheasant Bag	335,490	499,596	68,670	54,414	969,238	1,126,294	25,073	1,153,107
TOTAL PHEASANT HARVEST =						2,122,345		
RESIDENT-ONLY OPENING WEEKEND:								
No. Hunters Reporting Pheasant Days	314	549	75	153	1,091	-	-	-
Sum Pheasant Hunted Days	470	828	112	225	1,635	-	-	-
Average Days Hunted Pheasants	1.50	1.51	1.49	1.47	1.50	-	-	-
Sum Pheasants Bagged	676	1,383	181	199	2,439	-	-	-
Average Pheasant Bag for Weekend	2.15	2.52	2.41	1.30	2.24	-	-	-
Projected Days Pheasant Hunting	9,750	14,324	2,740	4,040	31,133	-	-	-
Projected No. Pheasant Hunters	6,500	9,486	1,839	2,748	20,755	-	-	-
Projected Pheasant Bag	13,975	23,905	4,432	3,572	46,491	-	-	-
RESIDENT-ONLY WEEKEND PHEASANT HARVEST =						46,491		
Upland Bird Hunters Mean Satisfaction Score *	5.35	5.46	5.18	5.34	5.39	6.00	5.96	6.00

* Based on scale of 1-7 with 1="very dissatisfied" and 7="very satisfied"

RESIDENT-ONLY WEEKEND 2007 PHEASANT SEASON PARTICIPATION AND BAG

Last Revised: 25 April 08

	# Days Hunted	# Responded	% of Total	Ave. Bag
Residents	0	3,959	78.4%	
	1	648	12.8%	1.33
	2	342	6.8%	3.14
	3	101	2.0%	5.02

2007 YOUTH-ONLY PHEASANT SEASON PARTICIPATION

Last Revised: 25 April 08

License Type	Number Participated	Did Not Participate	Percent Participated
Small Game	71	1,738	3.9%
Combination	152	2,329	6.1%
Youth Small Game	144	295	32.8%
Junior Combination	12	309	3.7%
Total	379	4,671	7.5%

Resident Pheasant Harvest Distribution by County 2007

COUNTY	HUNTER DISTRIBUTION				HARVEST DISTRIBUTION				Birds/Hunter **
	# Reported	# Projected	% of Total	# Proj w/ Unk *	# Reported	# Projected	% of Total	# Proj w/ Unk *	
Minnehaha	147	2,796	3.8	2,948	1,286	24,466	2.6	25,340	8.8
Pennington	13	247	0.3	260	56	1,065	0.1	1,103	4.3
Brown	252	4,794	6.5	5,055	3,723	70,831	7.6	73,361	14.8
Beadle	173	3,291	4.5	3,470	2,518	47,905	5.1	49,616	14.6
Codington	133	2,530	3.4	2,668	1,687	32,095	3.4	33,241	12.7
Brookings	187	3,557	4.8	3,751	2,359	44,880	4.8	46,483	12.6
Yankton	58	1,103	1.5	1,163	538	10,236	1.1	10,602	9.3
Davison	97	1,845	2.5	1,945	1,102	20,966	2.2	21,715	11.4
Lawrence	3	57	0.1	60	20	381	0.0	395	6.7
Aurora	94	1,788	2.4	1,885	1,411	26,845	2.9	27,804	15.0
Bennett	24	457	0.6	482	147	2,797	0.3	2,897	6.1
Bon Homme	34	647	0.9	682	163	3,101	0.3	3,212	4.8
Brule	89	1,693	2.3	1,785	1,111	21,137	2.3	21,892	12.5
Buffalo	13	247	0.3	260	158	3,006	0.3	3,113	12.2
Butte	9	171	0.2	180	65	1,237	0.1	1,281	7.2
Campbell	33	628	0.9	662	318	6,050	0.6	6,266	9.6
Charles Mix	107	2,036	2.8	2,147	1,106	21,042	2.2	21,794	10.3
Clark	85	1,617	2.2	1,705	1,176	22,374	2.4	23,173	13.8
Clay	54	1,027	1.4	1,083	581	11,054	1.2	11,449	10.8
Corson	14	266	0.4	280	88	1,674	0.2	1,734	6.3
Custer	2	38	0.1	40	5	95	0.0	98	2.5
Day	73	1,389	1.9	1,465	929	17,674	1.9	18,305	12.7
Deuel	44	837	1.1	883	444	8,447	0.9	8,749	10.1
Dewey	14	266	0.4	280	170	3,234	0.3	3,350	12.2
Douglas	32	609	0.8	642	569	10,825	1.2	11,212	17.8
Edmunds	83	1,579	2.1	1,665	1,584	30,136	3.2	31,212	19.1
Fall River	10	190	0.3	200	37	704	0.1	729	3.7
Faulk	60	1,141	1.5	1,203	866	16,476	1.8	17,065	14.4
Grant	49	932	1.3	983	543	10,331	1.1	10,700	11.1
Gregory	53	1,008	1.4	1,063	548	10,426	1.1	10,798	10.3
Haakon	17	323	0.4	341	211	4,014	0.4	4,157	12.4
Hamlin	76	1,446	2.0	1,525	897	17,066	1.8	17,676	11.8
Hand	95	1,807	2.4	1,905	1,129	21,479	2.3	22,246	11.9
Hanson	33	628	0.9	662	414	7,876	0.8	8,157	12.5
Harding	3	57	0.1	60	18	342	0.0	354	6.0
Hughes	80	1,522	2.1	1,605	1,070	20,357	2.2	21,084	13.4
Hutchinson	56	1,065	1.4	1,123	703	13,375	1.4	13,853	12.6
Hyde	35	666	0.9	702	371	7,058	0.8	7,310	10.6
Jackson	6	114	0.2	120	40	761	0.1	788	6.7
Jerauld	38	723	1.0	762	358	6,811	0.7	7,054	9.4
Jones	34	647	0.9	682	366	6,963	0.7	7,212	10.8
Kingsbury	89	1,693	2.3	1,785	877	16,685	1.8	17,281	9.9
Lake	98	1,864	2.5	1,965	1,019	19,387	2.1	20,080	10.4
Lincoln	61	1,160	1.6	1,223	656	12,481	1.3	12,927	10.8
Lyman	105	1,997	2.7	2,106	1,523	28,975	3.1	30,010	14.5
McCook	87	1,655	2.2	1,745	1,177	22,393	2.4	23,193	13.5
McPherson	37	704	1.0	742	535	10,178	1.1	10,542	14.5
Marshall	44	837	1.1	883	571	10,863	1.2	11,251	13.0
Meade	4	76	0.1	80	34	647	0.1	670	8.5
Mellette	3	57	0.1	60	26	495	0.1	513	8.7
Miner	92	1,750	2.4	1,845	1,332	25,342	2.7	26,247	14.5
Moody	61	1,160	1.6	1,223	783	14,897	1.6	15,429	12.8
Perkins	35	666	0.9	702	349	6,640	0.7	6,877	10.0
Potter	57	1,084	1.5	1,143	1,179	22,431	2.4	23,232	20.7
Roberts	55	1,046	1.4	1,103	689	13,108	1.4	13,576	12.5
Sanborn	78	1,484	2.0	1,565	1,162	22,107	2.4	22,897	14.9
Spink	146	2,777	3.8	2,928	2,534	48,210	5.2	49,932	17.4
Stanley	22	419	0.6	442	378	7,192	0.8	7,449	17.2
Sully	65	1,237	1.7	1,304	857	16,305	1.7	16,887	13.2
Tripp	63	1,198	1.6	1,263	582	11,073	1.2	11,469	9.2
Turner	53	1,008	1.4	1,063	575	10,939	1.2	11,330	10.9
Union	31	590	0.8	622	276	5,251	0.6	5,439	8.9
Walworth	69	1,313	1.8	1,384	1,088	20,699	2.2	21,438	15.8
Ziebach	7	133	0.2	140	75	1,427	0.2	1,478	10.7
Shannon	1	19	0.0	20	10	190	0.0	197	10.0
Todd	3	57	0.1	60	16	304	0.0	315	5.3
Unk/Unreported	211	4,014	-	-	1,757	33,427	-	-	8.3
TOTALS:	4,089	77,788	100%	77,778	50,945	969,238	100%	969,239	12.46

Revised: 28 March 08

* Includes unknown county projection values by assuming unknown county values are distributed the same as reported county values. Total values may be different due to rounding.

** Calculation uses "# projected" values without correction for unknown/unreported county values.

Nonresident Pheasant Harvest Distribution by County 2007

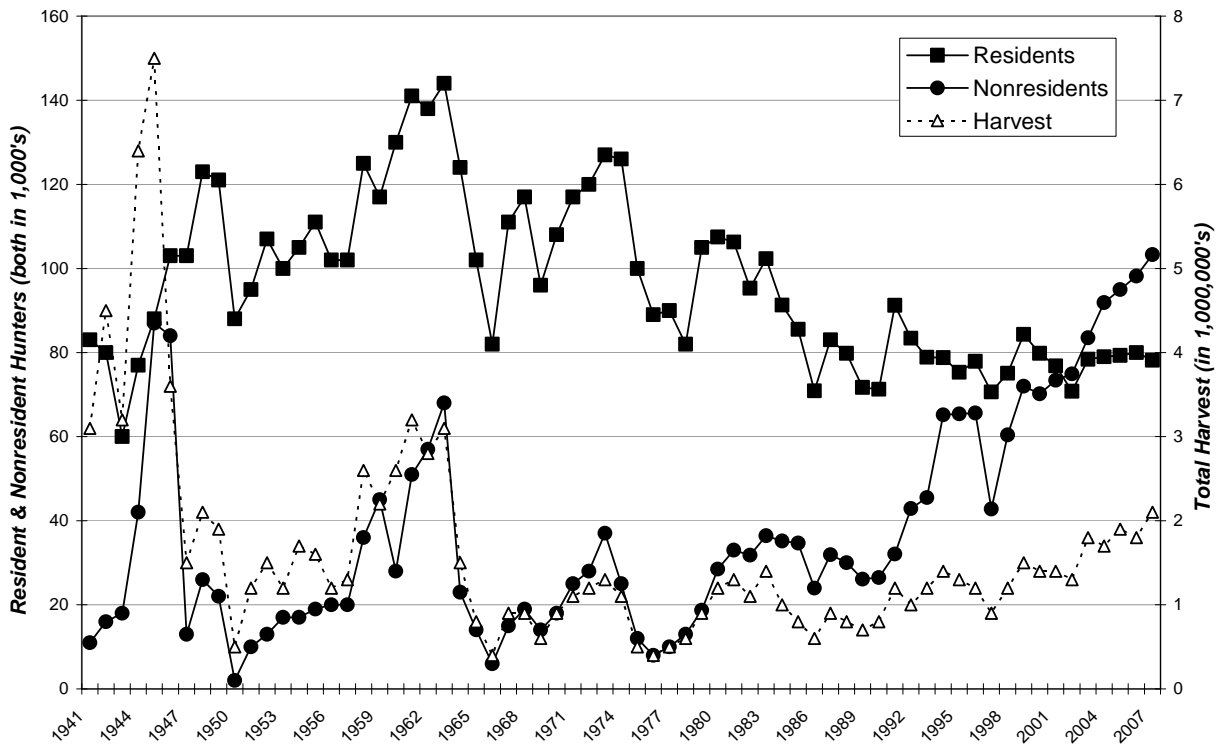
COUNTY	HUNTER DISTRIBUTION				HARVEST DISTRIBUTION				Birds/Hunter **
	# Reported	# Projected	% of Total	# Proj w/ Unk *	# Reported	# Projected	% of Total	# Proj w/ Unk *	
Minnehaha	11	215	0.2	224	97	1,892	0.2	1,953	8.8
Pennington	0	0	0.0	0	0	0	0.0	0	0
Brown	378	7,375	7.5	7,680	4,426	86,314	7.7	89,086	11.7
Beadle	335	6,536	6.6	6,807	3,747	73,072	6.5	75,419	11.2
Codington	123	2,400	2.4	2,499	1,134	22,115	2.0	22,825	9.2
Brookings	100	1,951	2.0	2,032	907	17,688	1.6	18,256	9.1
Yankton	33	644	0.7	671	230	4,485	0.4	4,629	7.0
Davison	214	4,175	4.2	4,348	2,023	39,452	3.5	40,719	9.4
Lawrence	1	20	0.0	21	15	293	0.0	302	14.7
Aurora	195	3,804	3.8	3,962	2,341	45,653	4.1	47,119	12.0
Bennett	8	156	0.2	162	87	1,697	0.2	1,752	10.9
Bon Homme	10	195	0.2	203	57	1,112	0.1	1,148	5.7
Brule	247	4,819	4.9	5,019	2,955	57,627	5.2	59,478	12.0
Buffalo	31	605	0.6	630	280	5,460	0.5	5,635	9.0
Butte	2	39	0.0	41	21	410	0.0	423	10.5
Campbell	84	1,639	1.7	1,707	1,139	22,212	2.0	22,925	13.6
Charles Mix	128	2,497	2.5	2,600	1,399	27,283	2.4	28,159	10.9
Clark	238	4,643	4.7	4,835	2,791	54,429	4.9	56,177	11.7
Clay	10	195	0.2	203	78	1,521	0.1	1,570	7.8
Corson	19	371	0.4	386	160	3,120	0.3	3,220	8.4
Custer	0	0	0.0	0	0	0	0.0	0	0
Day	126	2,458	2.5	2,560	1,344	26,210	2.3	27,052	10.7
Deuel	29	566	0.6	589	257	5,012	0.4	5,173	8.9
Dewey	32	624	0.6	650	428	8,347	0.7	8,615	13.4
Douglas	44	858	0.9	894	423	8,249	0.7	8,514	9.6
Edmunds	146	2,848	2.9	2,966	1,969	38,399	3.4	39,632	13.5
Fall River	3	59	0.1	61	20	390	0.0	403	6.6
Faulk	134	2,614	2.6	2,722	1,921	37,462	3.4	38,665	14.3
Grant	20	390	0.4	406	195	3,803	0.3	3,925	9.8
Gregory	154	3,004	3.0	3,128	1,538	29,993	2.7	30,956	10.0
Haakon	4	78	0.1	81	38	741	0.1	765	9.5
Hamlin	48	936	0.9	975	405	7,898	0.7	8,152	8.4
Hand	144	2,809	2.8	2,925	2,032	39,627	3.5	40,900	14.1
Hanson	41	800	0.8	833	490	9,556	0.9	9,863	11.9
Harding	6	117	0.1	122	51	995	0.1	1,027	8.5
Hughes	114	2,224	2.2	2,316	1,131	22,056	2.0	22,764	9.9
Hutchinson	49	956	1.0	996	407	7,937	0.7	8,192	8.3
Hyde	27	527	0.5	549	283	5,519	0.5	5,696	10.5
Jackson	7	137	0.1	143	94	1,833	0.2	1,892	13.4
Jerauld	77	1,502	1.5	1,564	809	15,777	1.4	16,284	10.5
Jones	33	644	0.7	671	383	7,469	0.7	7,709	11.6
Kingsbury	74	1,444	1.5	1,504	855	16,674	1.5	17,210	11.5
Lake	29	566	0.6	589	239	4,661	0.4	4,811	8.2
Lincoln	5	98	0.1	102	26	507	0.0	523	5.2
Lyman	231	4,507	4.6	4,694	2,512	48,988	4.4	50,561	10.9
McCook	19	371	0.4	386	142	2,769	0.2	2,858	7.5
McPherson	73	1,424	1.4	1,483	950	18,526	1.7	19,121	13.0
Marshall	57	1,112	1.1	1,158	623	12,149	1.1	12,539	10.9
Meade	9	176	0.2	183	69	1,346	0.1	1,389	7.6
Mellette	18	351	0.4	366	181	3,530	0.3	3,643	10.1
Miner	93	1,814	1.8	1,889	1,061	20,691	1.9	21,356	11.4
Moody	22	429	0.4	447	214	4,173	0.4	4,307	9.7
Perkins	22	429	0.4	447	199	3,881	0.3	4,006	9.0
Potter	88	1,717	1.7	1,788	1,126	21,959	2.0	22,664	12.8
Roberts	45	878	0.9	914	468	9,127	0.8	9,420	10.4
Sanborn	106	2,068	2.1	2,154	1,198	23,363	2.1	24,113	11.3
Spink	295	5,755	5.8	5,993	4,087	79,703	7.1	82,263	13.8
Stanley	48	936	0.9	975	446	8,698	0.8	8,977	9.3
Sully	73	1,424	1.4	1,483	817	15,933	1.4	16,445	11.2
Tripp	260	5,072	5.1	5,282	2,941	57,354	5.1	59,196	11.3
Turner	13	254	0.3	265	132	2,574	0.2	2,657	10.1
Union	8	156	0.2	162	97	1,892	0.2	1,953	12.1
Walworth	69	1,346	1.4	1,402	696	13,573	1.2	14,009	10.1
Ziebach	4	78	0.1	81	57	1,112	0.1	1,148	14.3
Shannon	2	39	0.0	41	9	176	0.0	182	4.5
Todd	4	78	0.1	81	39	761	0.1	785	9.8
Unk/Unreported	210	4,097	-	-	1,840	35,883	-	-	8.8
TOTALS	5,282	103,048	100%	103,050	59,129	1,153,107	100%	1,153,110	11.19

Revised: 28 March 08

* Includes unknown county projection values by assuming unknown county values are distributed the same as reported county values. Total values may be different due to rounding.

** Calculation uses "# projected" values without correction for unknown/unreported county values.

SOUTH DAKOTA PHEASANT HARVEST 1941-2007



SOUTH DAKOTA PHEASANT HUNTERS AND AVERAGE SEASON HARVEST 1941-2007

